

People Who Abuse Prescription Painkillers Get Drugs From a Variety of Sources



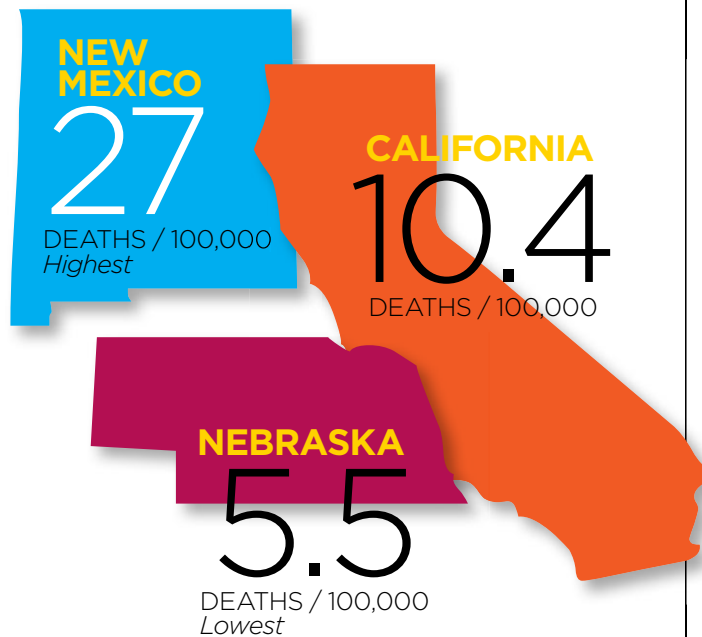
Prescription DRUG ABUSE Stats



DRUG OVERDOSE DEATH RATES

(illicit, prescription, and over-the-counter) in the United States have more than tripled since 1990.

DRUG OVERDOSE DEATH RATES BY STATE, 2008:



IN 2010
2 MILLION

people reported using prescription painkillers nonmedically for the first time within the last year — nearly 5,500 a day.

FOR EVERY

1

DEATH,
THERE ARE

10

Treatment
Admissions for Abuse

32

Emergency
Department Visits
for Misuse or Abuse

130

People Who Abuse
or Are Dependent

825

Nonmedical Users

California & San Diego County Drug-induced Deaths 1999-2010

**California
Population:**
37,253,956

**Death Rate
From Drugs:**
11.4 / 100,000

**San Diego
County
Population:**
3,095,313

**Death Rate
From Drugs:**
12.4 / 100,000

10
Times More
Pain Pills This
Year Than
10
Years Ago

In California: 6.2 kilograms of pain killers per 10,000 people — enough to medicate every single American round the clock for a month. In Florida: 12.6 kilograms.

Unintentional Overdose Deaths Involving Opioid Analgesics Parallel Opioid Sales, 1997-2007

Opioid Analgesics Distributed
by Drug Companies

96 mg/
Person
1997

698 mg/
Person*
2007

Opioid
Overdose Deaths

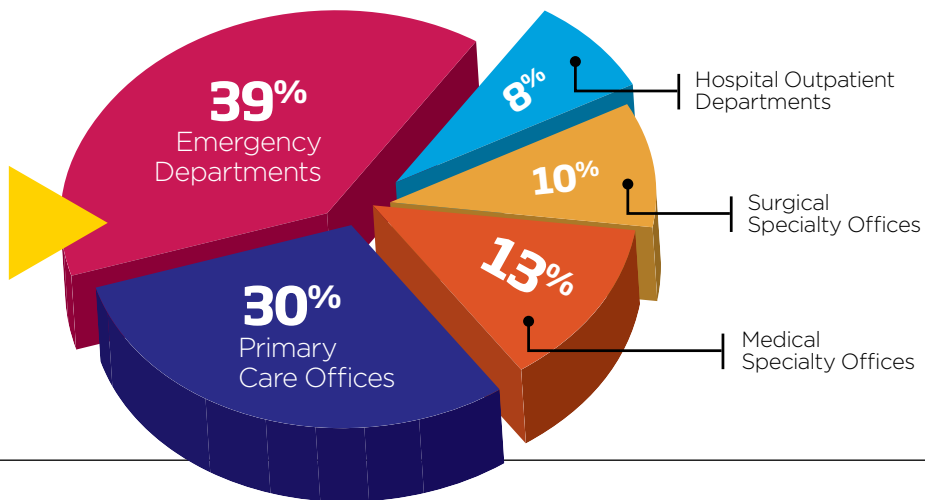
2,901
1999

11,499
2007

*Enough for every American to take 5mg Vicodin every four hours for three weeks



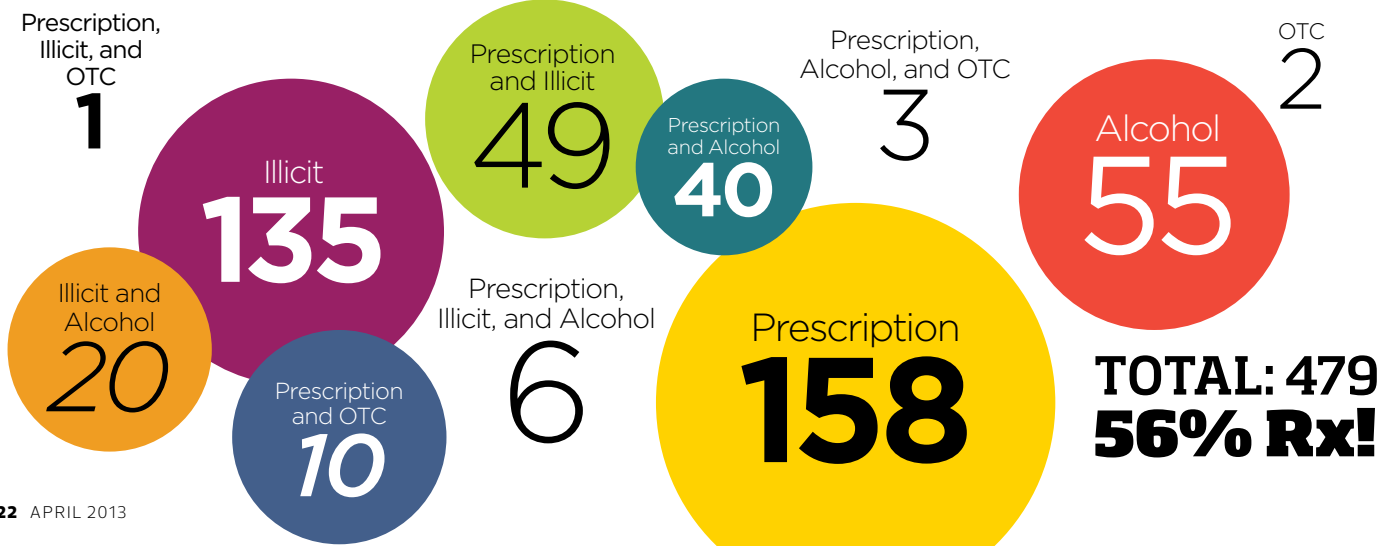
Distribution of Narcotic Analgesics to Patients by Healthcare Setting



TOP 10 DRUG DEATHS IN SAN DIEGO COUNTY

2000-2011	2011
Methamphetamine	1 Alcohol
Alcohol	2 Methamphetamine
Heroin	3 Heroin
Morphine	4 Oxycodone (Percocet, Norco)
Cocaine	5 Methadone
Diazepam (Valium)	6 Alprazolam (Xanax)
Methadone	7 Hydrocodone (Vicodin)
Oxycodone (Percocet)	8 Diazepam (Valium)
Hydrocodone (Vicodin, Norco)	9 Morphine
Diphenhydramine (Benadryl)	10 Diphenhydramine (Benadryl)

SAN DIEGO DRUG DEATHS, 2011



Ranking of Substance by Age Group, 2011

*Five or Fewer Cases

	10-19	20-29	30-39	40-49	50-59	60-69
1	Heroin (3)*	Heroin (10)	Heroin (20)	Methamphetamine (40)	Methamphetamine (46)	Methamphetamine (15)
2	Alprazolam (2)*	Alprazolam (20)	Methamphetamine (16)	Oxycodone (23)	Hydrocodone (23)	Methadone (8)
3	Methadone (1)* Methamphetamine* (1) Methylone (1)*	Methadone (5)* Diazepam (5)* Clonazepam (5)* Hydrocodone (5)*	Alprazolam (12) Oxycodone (12)	Alprazolam (13)	Oxycodone (21)	Morphine (6)
4		Methamphetamine*(4) Cocaine (4)* Oxycodone (4)*	Methadone (9)	Heroin (12) Hydrocodone (12)	Heroin (20)	Oxycodone (5)* Heroin (5)* Hydrocodone (5)*
5			Diazepam (7) Cocaine (7)	Methadone (11)	Methadone (17) Diazepam (17)	
6			Hydrocodone (6)	Diphenhydramine (10)	Alprazolam (15) Morphine (15)	

MEDICAL PARK
CREEKVIEW
1910-1968 Via Centre Drive, Vista, CA 92081
Excellence in a Healing Environment



MEDICAL OFFICE
FOR SALE OR LEASE

- 1,494 - 50,424 RSF Available
- Condo & building development
- Located near Tri-City Medical Center
- Access via Hwy. 78 via Emerald Dr., Plaza Dr. & College Blvd.
- Modern architecture with a superb image
- Parking ratio of 5.6/1,000 on-site plus frontage
- Building signage available
- Medical & inpatient overnight stay uses allowed
- Attractive / flexible financing options

For more information, please contact:
Avilla / Sundberg / Cowan
Medical Office Advisors
760.431.4201
ascadvisors@breb.com


Visit www.creekviewmedical.com

Cassidy Turley Commercial Real Estate Services
Cassidy Turley San Diego 1000 Aviara Pkwy., Suite 100, Carlsbad, CA 92011
T 760.431.4200 F 760.454.3869 cassidyturley.com/sandiego

The information contained herein has been given to us by the owner of the property or other sources we deem reliable. We have no reason to doubt its accuracy, but we do not guarantee it. All information should be verified prior to purchase or lease.

TRACY ZWEIG ASSOCIATES
A REGISTRY & PLACEMENT FIRM

**Physicians
Nurse Practitioners
Physician Assistants**



**Locum Tenens
Permanent Placement**

**Voice: 800-919-9141 or 805-641-9141
FAX: 805-641-9143**

**tzweig@tracyzweig.com
www.tracyzweig.com**